

## How to: Quizzes, Grades, Certificate of Completion

How to access final quiz for each lesson

**Step 1:**  
Once you have finished Lesson 1 - click Lesson 1 Quiz either the highlighted blue icon or the icon at the bottom right hand corner.

Lesson 1

**Done:** View **Done:** Go through the activity to the end

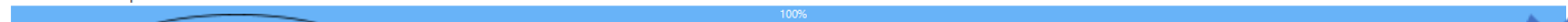


### UNDERSTANDING DEMENTIA

Congratulations - end of lesson reached

Well done!

You have completed 100% of the lesson



[Review lesson](#) [Go to Lesson 1 Quiz](#) [Return to CSS Dementia Education](#) [View grades](#)

[← Lesson 1 Warm-up Quiz](#)


Jump to...

[Lesson 1 Quiz ▶](#)

Step 2  
Click "Attempt quiz now".

Lesson 1 Quiz

ENGLISH (UNITED STATES) (EN\_US) Anita Looby



# QUIZ

Lesson 1 Quiz should take about 5 minutes. You need 80% to pass.  
You can redo questions as many times as you like!

Grading method: Highest grade  
Grade to pass: 8.00 out of 10.00

**Attempt quiz now**

← Lesson 1 Jump to... Lesson 2 Warm-up Quiz →

**Step 3**


Answer each multiple choice question by clicking in the white circle next to your selected response. Then, click "Next page".

Question **1**Not yet  
answeredPoints out of  
1.00

Flag question

Dementia is:

- A normal part of aging
- Another name for Alzheimer's Disease
- An umbrella term for symptoms like memory loss, confusion and personality changes
- All of the above

  
Next page[← Lesson 1](#)

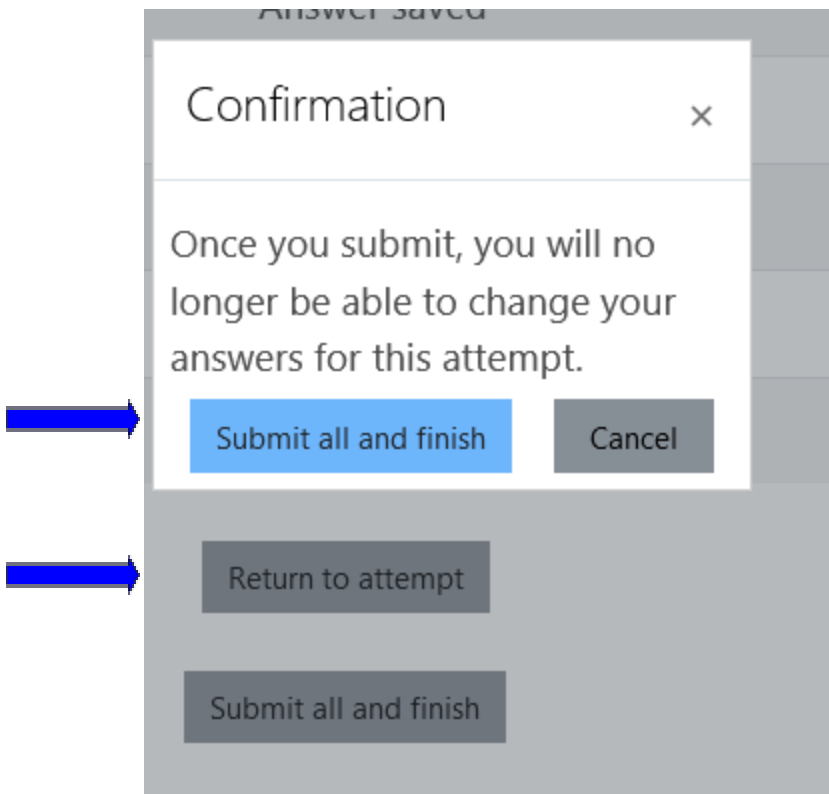
Jump to...

[Lesson 2 Warm-up Quiz →](#)

**Step 4**

(Optional) To review your answers click, "Return to attempt".

If you are finished click, "Submit all and finish".



**Step 6**

This screen comes up and tells you whether your answers are correct or incorrect. Read over the reason provided for incorrect answers. Do not worry if you do not pass the quiz. You will have several attempts to "reattempt quiz". You need an 8 out of 10 to pass.

## CSS Dementia Education

[Home](#) / [My courses](#) / [CSSDE](#) / [Lesson 1 - Understanding Dementia](#) / [Lesson 1 Quiz](#)

<b>Started on</b>	Wednesday, November 10, 2021, 2:36 PM
<b>State</b>	Finished
<b>Completed on</b>	Wednesday, November 10, 2021, 2:37 PM
<b>Time taken</b>	56 secs
<b>Points</b>	5.00/9.00
<b>Grade</b>	5.56 out of 10.00 (56%)

Question **1**  
Correct  
1.00 points out of 1.00  
Flag question

Dementia is:

- A normal part of aging
- Another name for Alzheimer's disease
- An umbrella term for symptoms like memory loss, confusion and personality changes
- All of the above

✓ **Correct!**

Question **2**  
Correct  
1.00 points out of 1.00  
Flag question

Which of the following is **not** a type of dementia?

- Vascular dementia
- Lewy body dementia
- Cognitive dementia
- Frontotemporal dementia

✓ **Correct!**

**Step 7:**

To attempt the quiz again click "Reattempt Quiz".  
Once you have a passing grade go to Certificate of Completion.

## Summary of your previous attempts

Attempt	State	Points / 9.00	Grade / 10.00	Review
1	Finished Submitted Thursday, November 11, 2021, 9:20 AM	7.00	7.78	<a href="#">Review</a>
2	Finished Submitted Thursday, November 11, 2021, 9:33 AM	9.00	10.00	<a href="#">Review</a>

Highest grade: 10.00 / 10.00.

Re-attempt quiz

[← Lesson 1](#)

Jump to...



[Certificate of Completion ▶](#)

**Step 8**  
This screen comes up. Click "View Certificate".

---

### Certificate of Completion

Community Support Services Dementia Education - [Lesson 1](#)

Awarded on: Wednesday, November 10, 2021, 3:53 PM



[← Lesson 1 Quiz](#)

[Lesson 2 Warm-up Quiz ▶](#)

**Step 9**

This screen comes up with your certificate. You can download or print your certificate for your records.



The screenshot shows a web browser window with a blue border. The main content area has a light gray background with a dotted pattern at the top. The text "Certificate of Completion" is displayed in a large, blue, sans-serif font. Below the text is a black rectangular redaction bar. To the right of the redaction bar is a blue circular icon containing a stylized blue brain with a blue ribbon. A blue arrow points from the text box to the top right corner of the browser window, where a toolbar is circled in black. The toolbar includes icons for print, download, and other browser functions.

Certificate of  
Completion

10 November 2021



